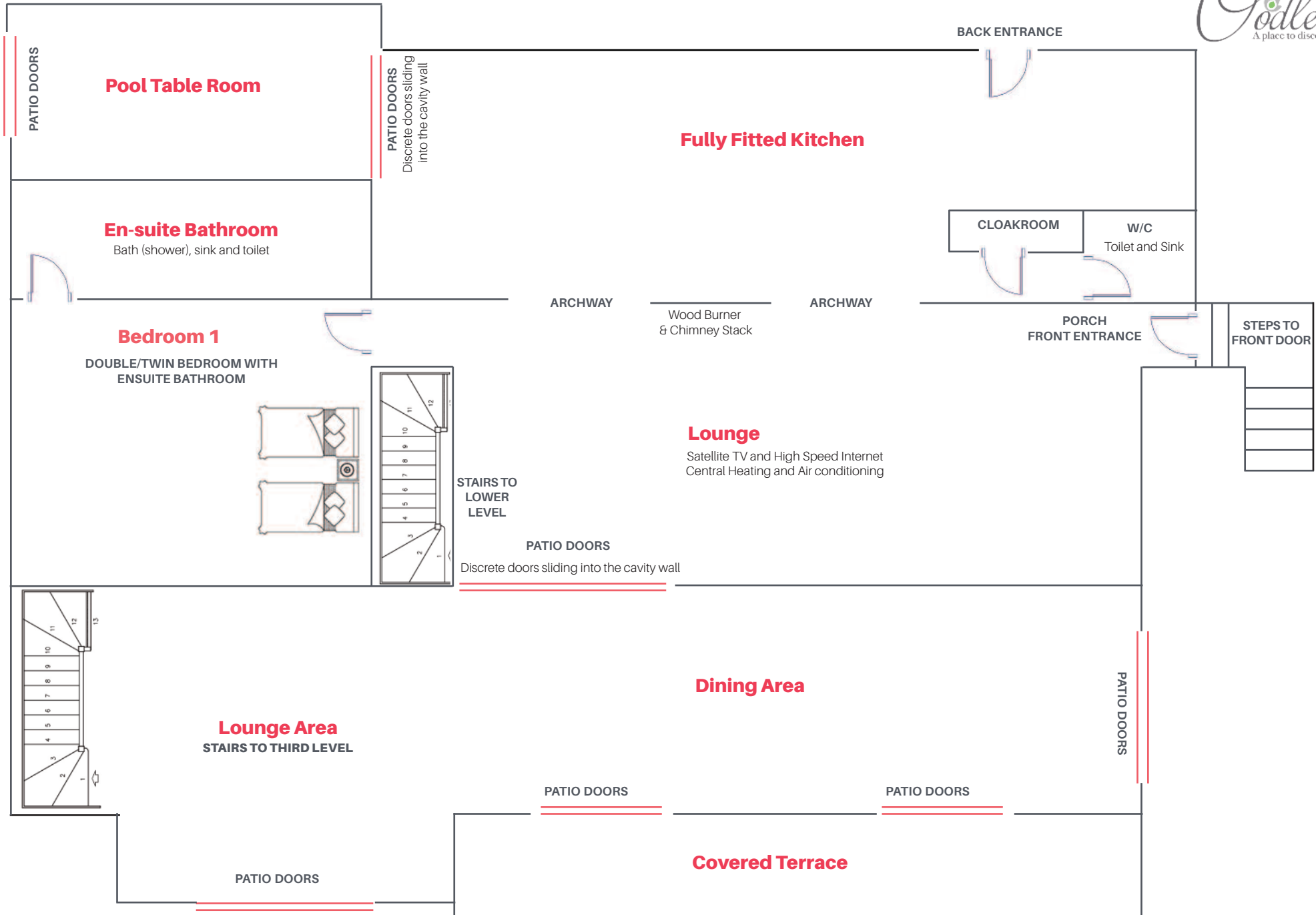


# Middle Level Floor Plan - Main House



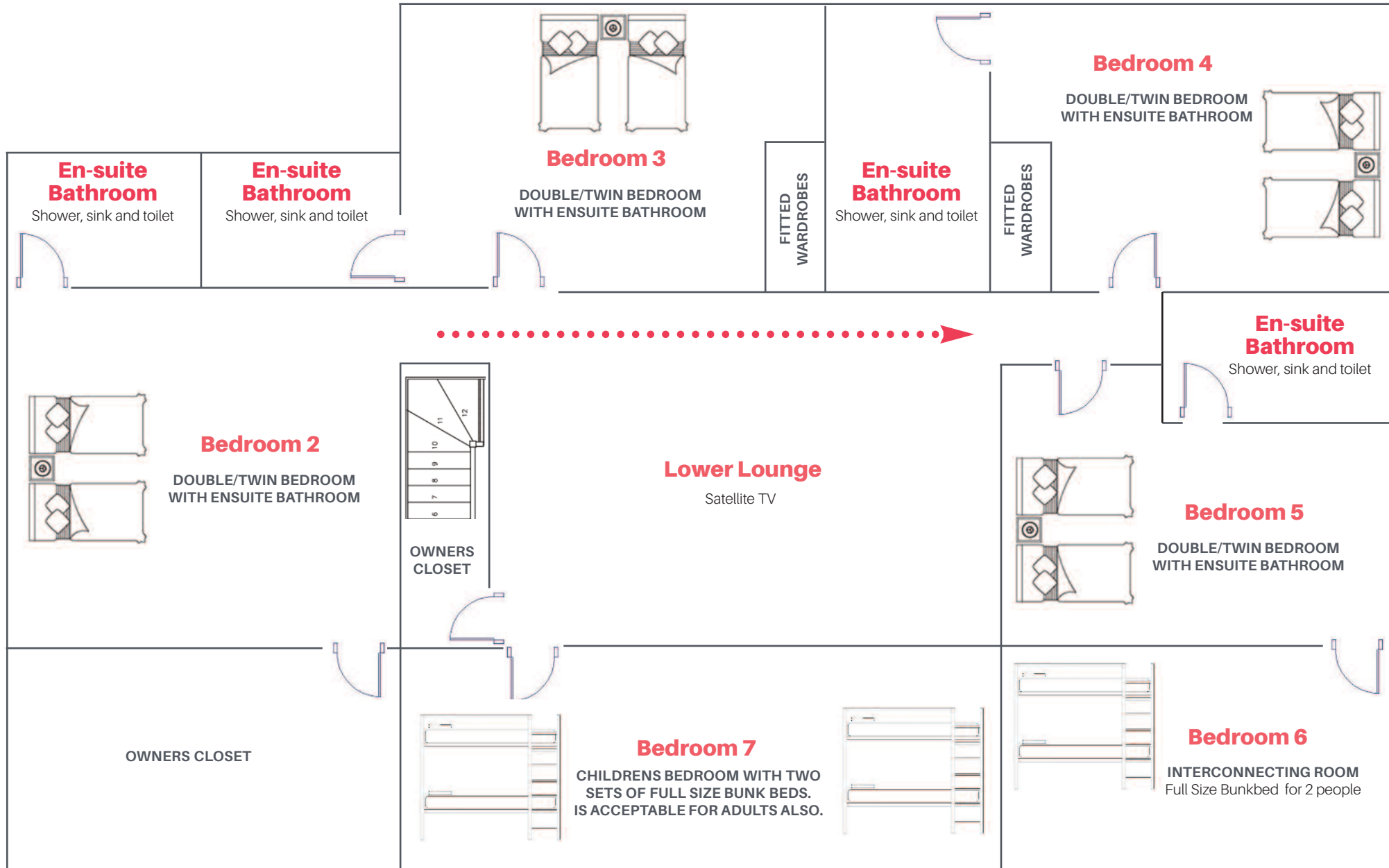
INTERIOR 370 SQ MTRS | EXTERIOR 13,000 SQ MTRS



# Lower Level Floor Plan - Main House



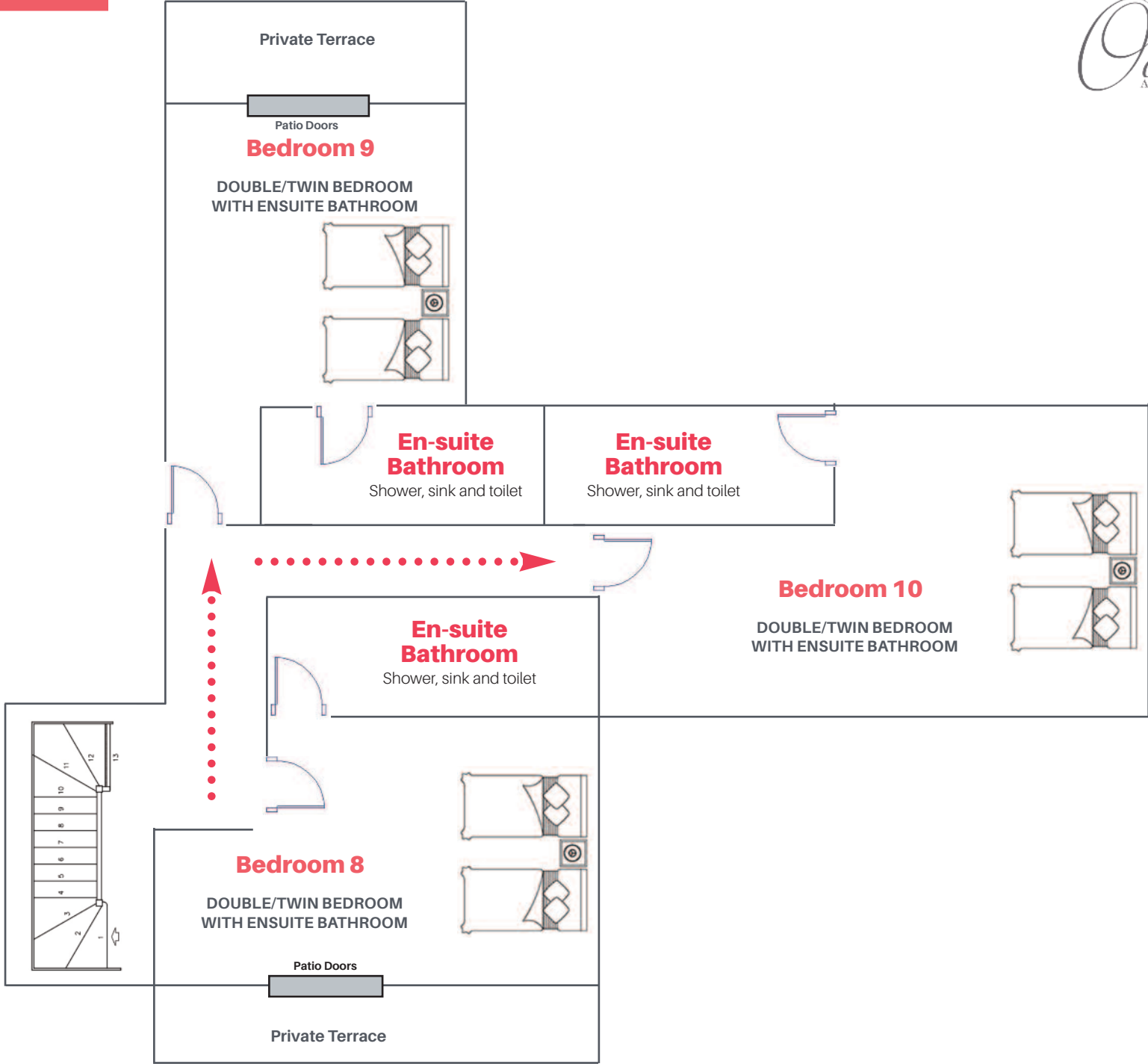
INTERIOR 370 SQ MTRS | EXTERIOR 13,000 SQ MTRS



# Upper Level Floor Plan

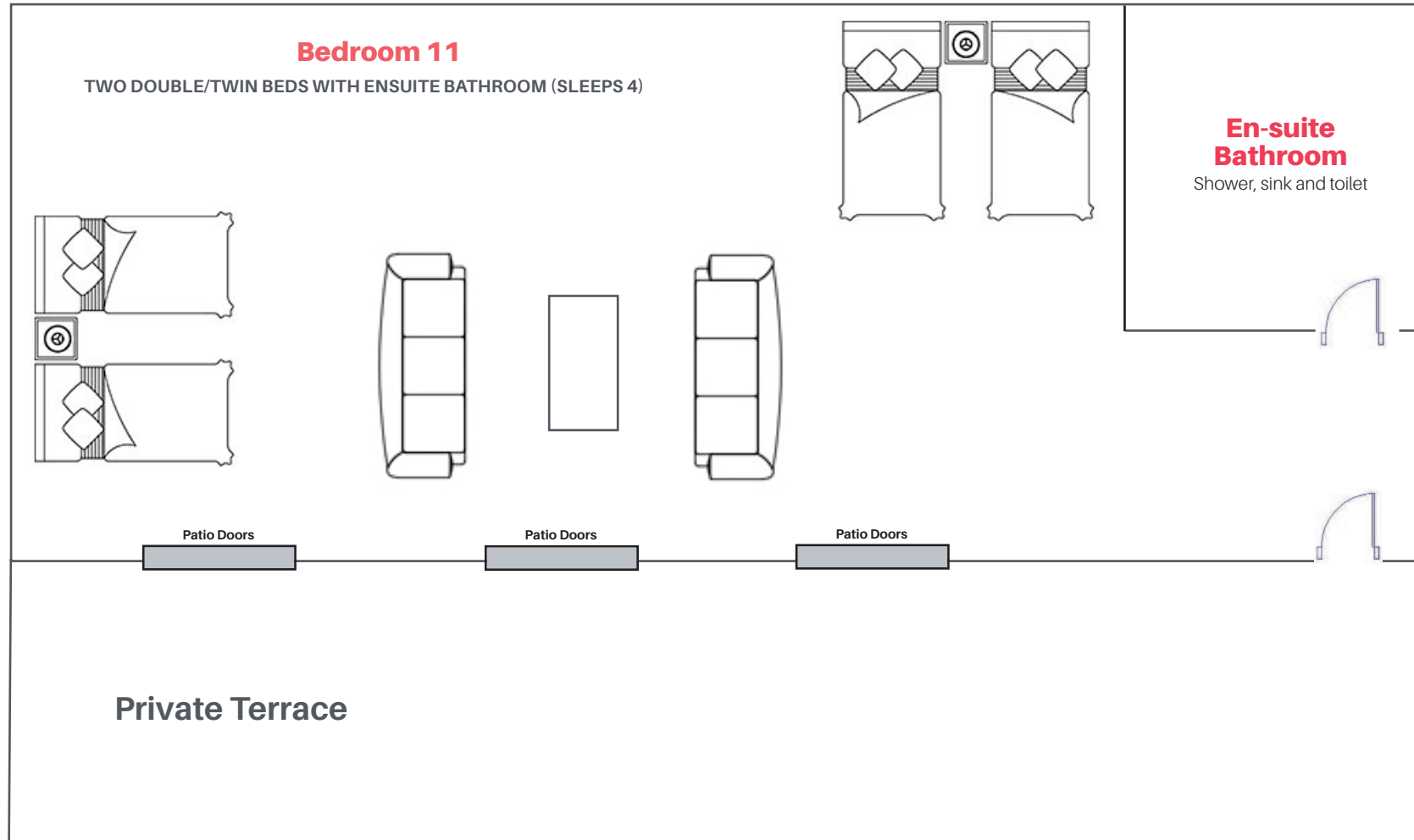


INTERIOR 370 SQ MTRS | EXTERIOR 13,000 SQ MTRS



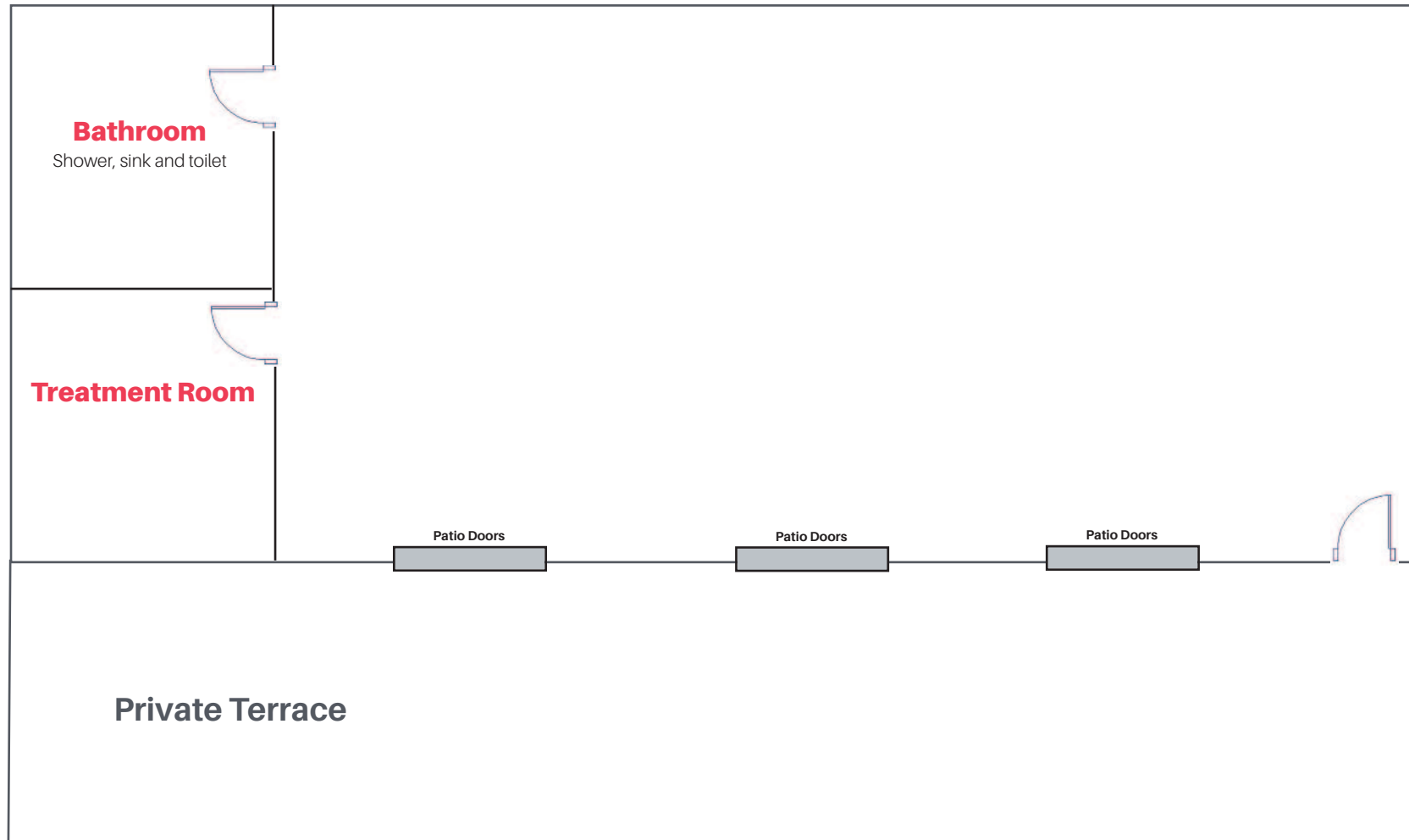
# Suite - 60mtrs

INTERIOR 60 SQ MTRS | EXTERIOR 13,000 SQ MTRS





INTERIOR 60 SQ MTRS | EXTERIOR 13,000 SQ MTRS

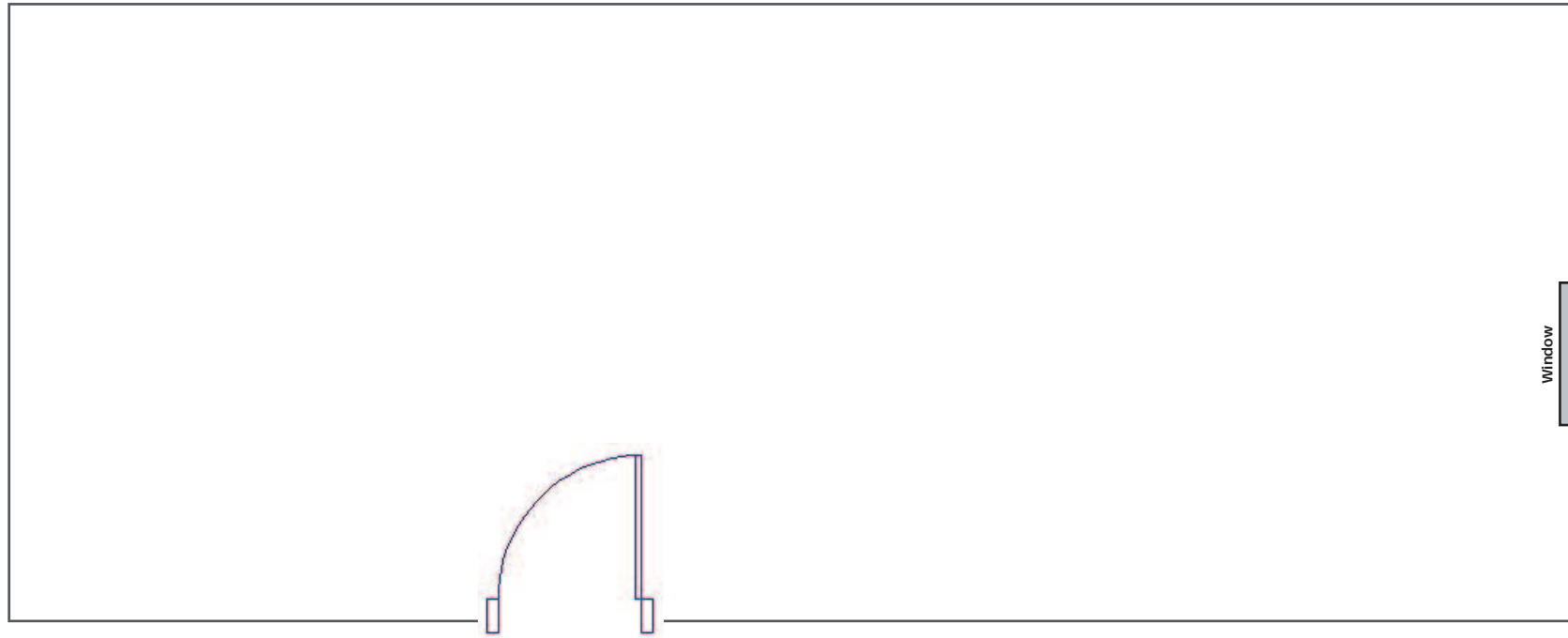


Separate yoga studio/fitness suite

**NB: Available for retreat bookings only, contact us for more information.**

# Gymnasium

INTERIOR 40 SQ MTRS | EXTERIOR 13,000 SQ MTRS



Separate gymnasium

**NB: Available for retreat bookings only, contact us for more information.**